



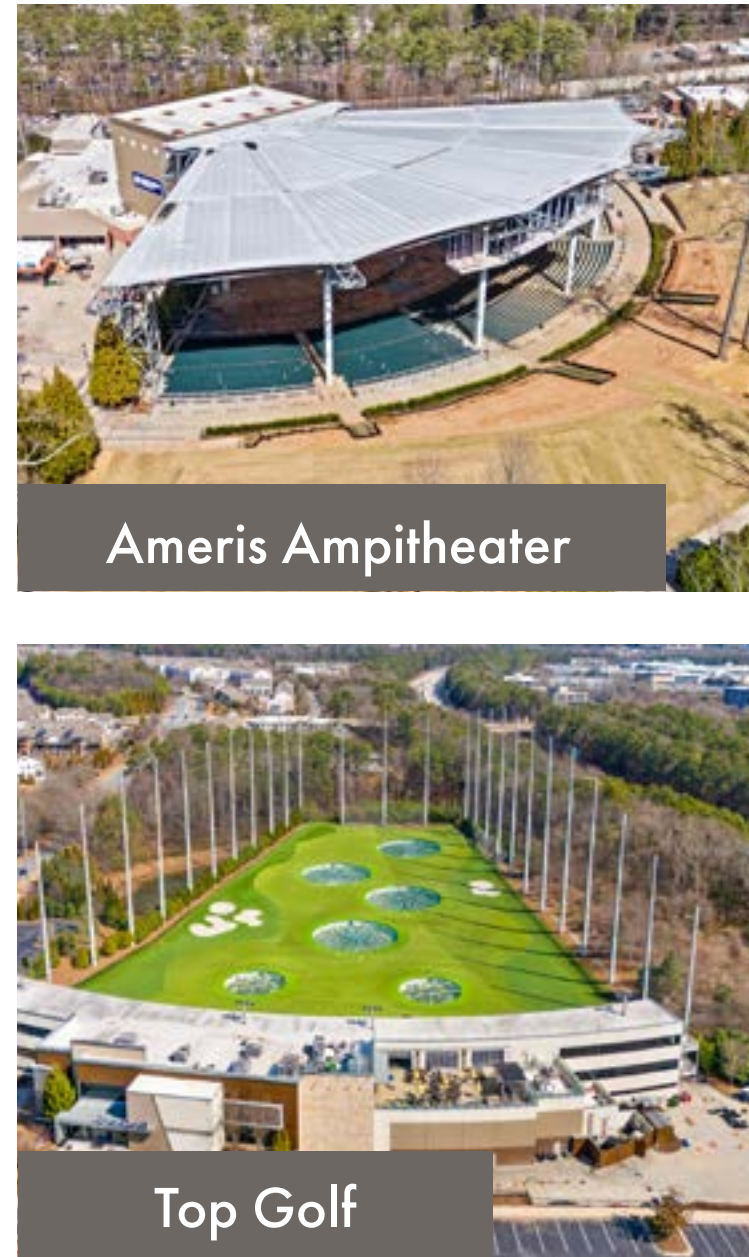
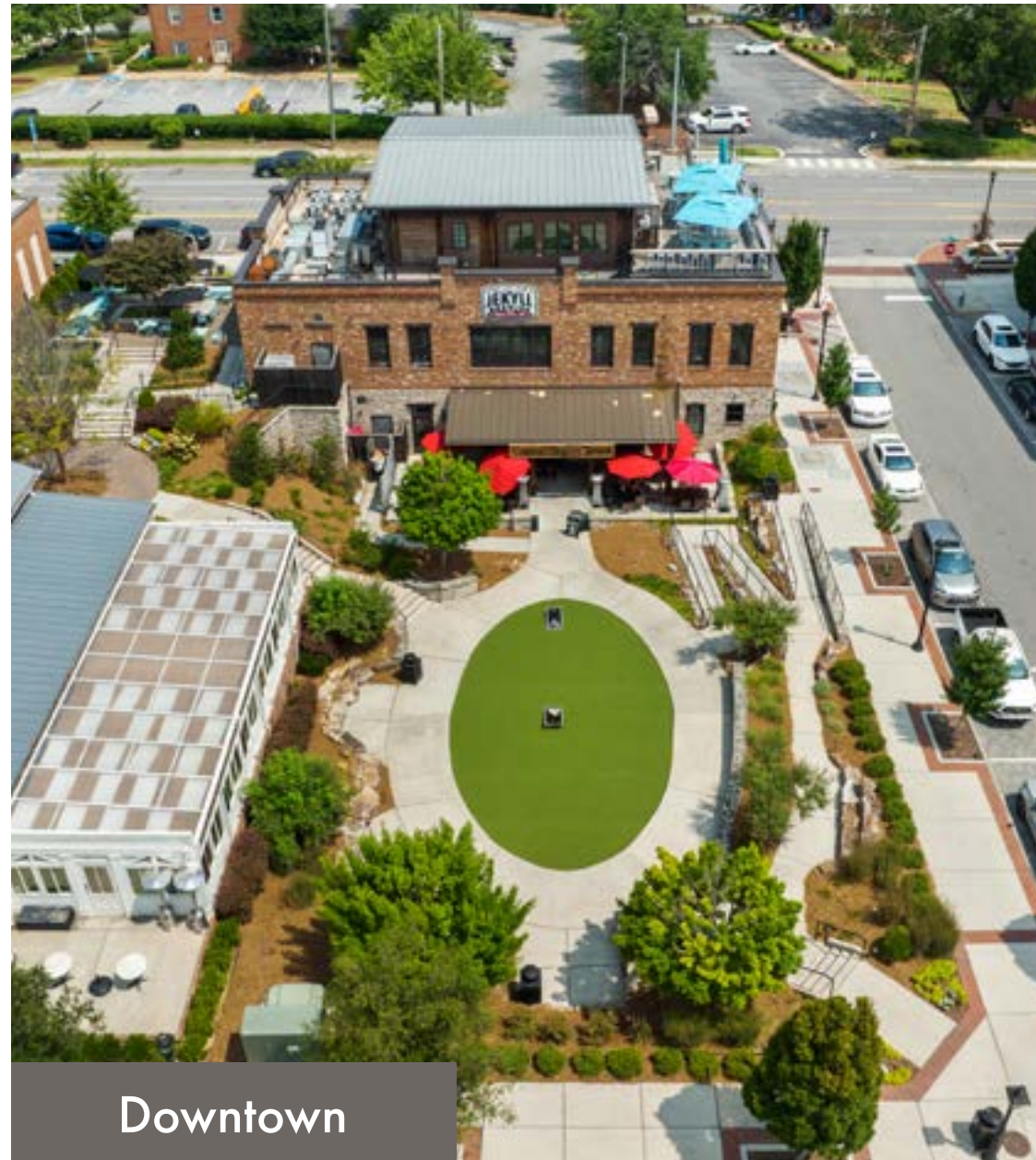
An eclectic mix of convenient living and access to entertainment near bustling downtown Alpharetta and Avalon.

Embrace The Gathering - Alpharetta: A vibrant new community providing unparalleled access to downtown Alpharetta and Avalon, offering a wealth of recreational activities and captivating home designs. You'll be steps away from numerous local shops, top-notch dining options, and endless opportunities for relaxation and exploration.

Stepping into our homes, you'll find that our floor plans combine open space for hosting company with serene private retreats to relax in peace. The Gathering - Alpharetta offers four distinct 3-story floor plans ranging from 2 to 4 bedrooms with private garage spaces and a deck or rooftop terrace to connect with the outdoors. Plus, the connection to the AlphaLoop path further enhances an already pristine outdoor experience.



Townhomes from the high \$500s - \$1M+
& Single-Family Homes from \$1.3M+



Excitement awaits just around the corner in the immersive Downtown Alpharetta and Avalon.

The Gathering - Alpharetta boasts a one-of-a-kind location along the AlphaLoop path, creating an integrated feel with the surrounding community of Alpharetta. The Gathering - Alpharetta is at the center of it all, and will see even more mixed-use commercial developments breaking ground in the future. This upcoming space will feature a variety of food and entertainment choices, providing residents with an even wider array of options for leisure and enjoyment. If you plan to venture outside the community and downtown, you'll find a plethora of outdoor excursions await, including the premier [Willis Park](#), and the exceptional [Chattahoochee River National Recreation Area](#).

Explore top-notch dining options available within biking or walking distance; it's all available just minutes from your home. Start your morning at [Maple Street Biscuit Company](#), indulge in global fare at the contemporary [Citizen Soul](#), or complete the night over drinks and live music at [Roaring Social](#). If you're craving something sweet, head on over to [Jeni's Splendid Ice Cream](#). The opportunities for dining in Alpharetta are ever-expanding, meaning your new favorite spot may just be coming soon.

Venture into the top-notch shopping destination of Avalon, less than a mile from the community. This walkable shopping district boasts dozens of upscale shops including popular clothing stores, boutiques and specialty stores, and even home decor options.

In an area known for a collection of gorgeous parks and hiking trails, The Gathering - Alpharetta is the perfect launching place to begin your outdoor excursion. The celebrated Chattahoochee River National Recreation Area, Big Creek Greenway, and Newton Park are just a few of the top destinations for nature enthusiasts in the area. Discover the wonders that lay just outside The Gathering - Alpharetta today.



Surrounding Locations

The bustling community of Alpharetta surrounding The Gathering has so much to offer - get to know everything in and around the community.

POINTS OF INTEREST

AlphaLoop Access	0.1 miles
Avalon	<1 mile
North Point Mall	0.9 miles
Willis Park	1.8 miles
Country Club of Roswell	3.6 mile
Newtown Park	3.8 miles
Big Creek Park	4 miles
Autrey Mill Nature Preserve	6.4 miles
RiverPines Golf Club	6.4 miles
Horseshoe Bend Golf Club	8.1 miles
Jones Bridge Park	13 miles
Chattahoochee River National Recreation Area	21 miles





Neighborhood Attractions

Explore the energetic surrounding areas of Alpharetta with quick access to quick access to top-notch shopping, dining, and entertainment, all within reach from the AlphaLoop trail.

ADDITIONAL POINTS OF INTEREST (many more points of interest not listed)

🍴 Restaurants		🛒 Shopping/Grocery	
CAVA	1 mile	North Point Mall	0.9 miles
Chipotle	1 mile	North Point Village Shopping Center	.9 miles
Chicken Salad Chick	1.1 miles	Publix	1.3 miles
Chick-fil-A	1.3 miles	Target	1.4 miles
Lazy Dog	1.3 miles	Whole Foods	1.4 miles
Egg Harbor Cafe	1.5 miles	Sam's Club	2.0 miles
Food Terminal	1.5 miles	The Fresh Market	3.7 miles
The Cheesecake Factory	1.6 miles	Costco	4.8 miles
Pappadeaux Seafood Kitchen	1.9 miles	Kroger	5 miles
P.F. Chang's	2.3 miles		
Passador Brazilian Steakhouse	2.4 miles		
🎭 Entertainment		🏥 Medical	
Ameris Bank Ampitheater	0.9 miles	Peachtree Immediate Care	1.1 miles
Fairway Social	1.5 miles	Wellstar North Fulton Medical Center	2.3 miles
Top Golf	1.7 miles	Children's Healthcare of Atlanta Urgent Care Center	2.5 miles
Main Event	2.0 miles	Emory Johns Creek Hospital	9.9 miles
Studio Movie Grill	2.3 miles		
🎓 Schools			
Gwinnett Technical College Alpharetta	1.5 miles		
Northwestern Middle	5 miles		
Milton High	4.9 miles		





Community Map

Enjoy our blooming community garden and pond, two parks, and our exercise loop and stations, just steps from your front door.



Community Amenities



Community Garden

Plant your seeds and harvest, or take a stroll through our community-maintained garden space.



Flexible Green Spaces

Our open green spaces create the perfect environment for pick-up games, playing catch, or hosting a picnic.



Exercise Stations

Take a lap around the exercise loop, and finish at one of our dedicated stations for a complete workout.

Design Features & Finishes

Connected, Luxury Living

The Gathering - Alpharetta is a connected lifestyle community putting emphasis on ease of access, and ease of living alike.

Our two three-story single-family homes and townhome designs are equipped with a host of impressive features to meet and exceed your expectations. With four distinct floor plans complete with up to four private bedrooms, including a primary suite with a semi-frameless shower enclosure, you'll be no stranger to the comforts of home. 10' ceilings and luxe design finishes throughout the main floor create an open plan for hosting friends and family from the living room, dining room, and kitchen, with an open patio or deck space connecting you to the outdoors.

Community Key Features



2-4 bedrooms



2.5-3.5 baths



Up to 3,125 SF Floor Plans



1 and 2-Car Garage



Patio + Rooftop Living Options



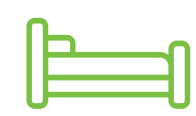
3-story Homes



Emery Contemporary



Floor Plan



4 bedrooms



3.5 baths



3,125 sqft



3 stories



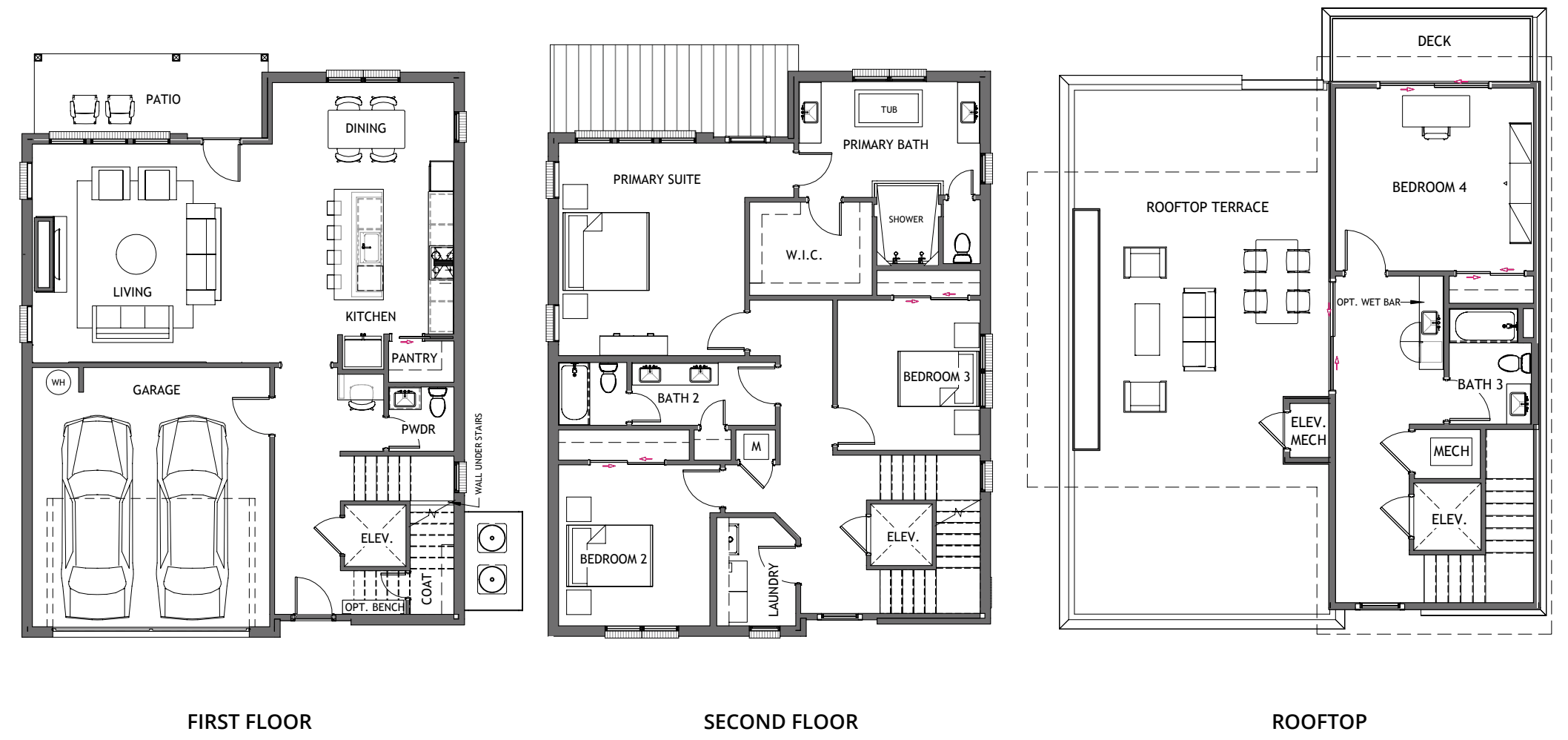
Patio



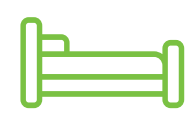
Rooftop Terrace



Emery Gable



Floor Plan



4 bedrooms



3.5 baths



3,098 sqft



3 stories



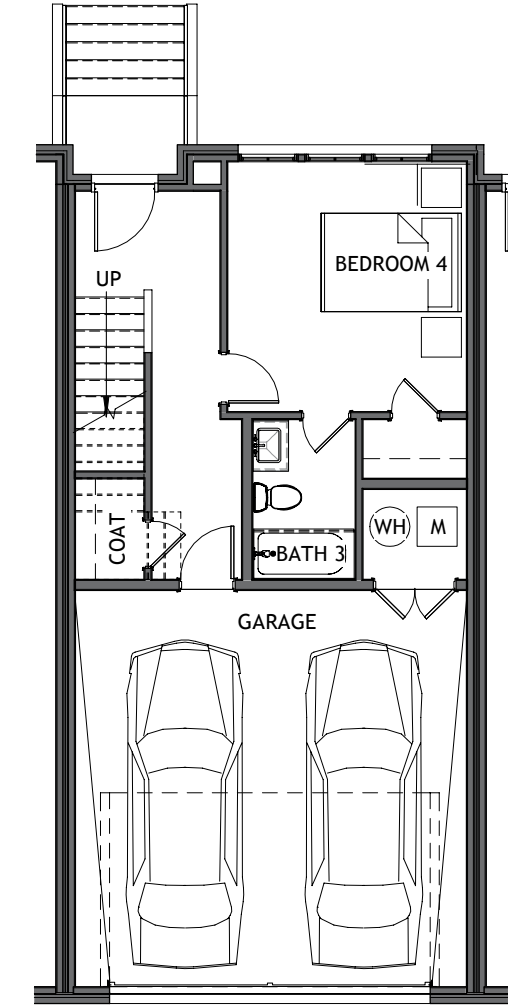
Patio



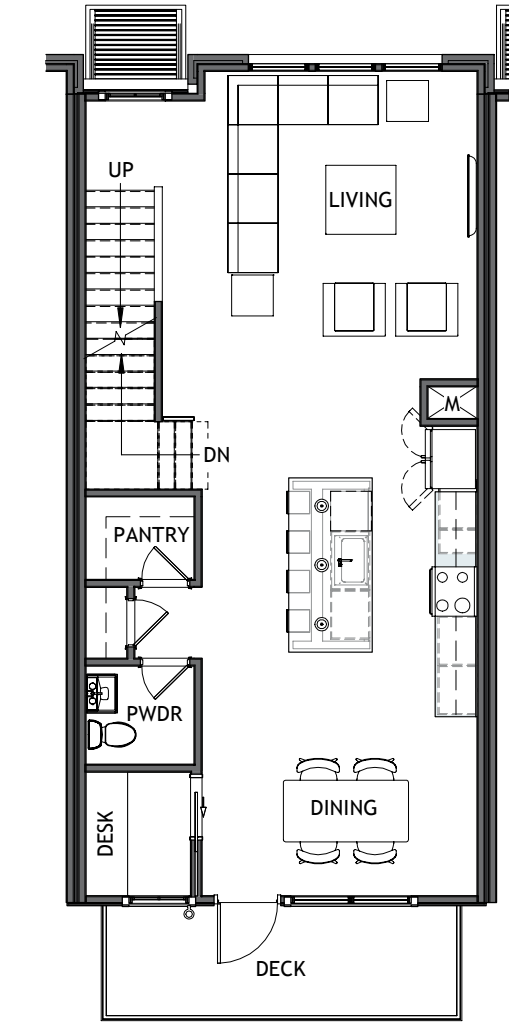
Rooftop Terrace



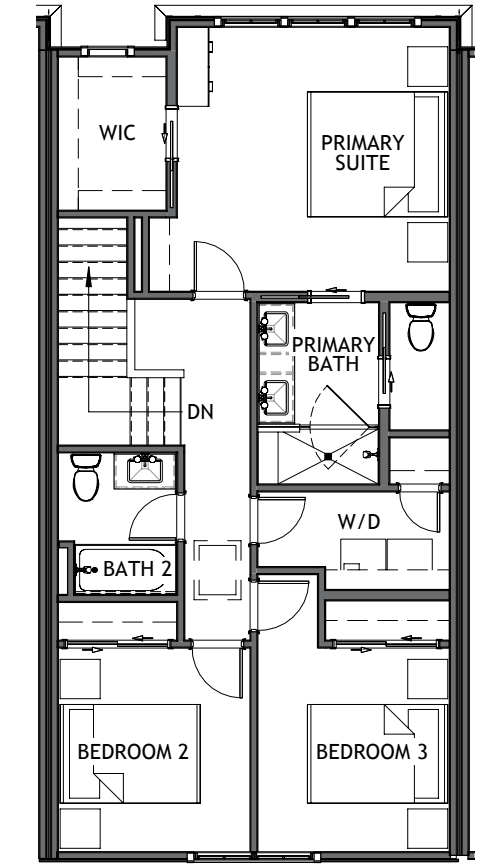
Adeline



TERRACE LEVEL

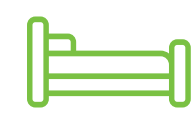


SECOND FLOOR



THIRD FLOOR

Floor Plan



4 bedrooms



3.5 baths



2,160 sqft



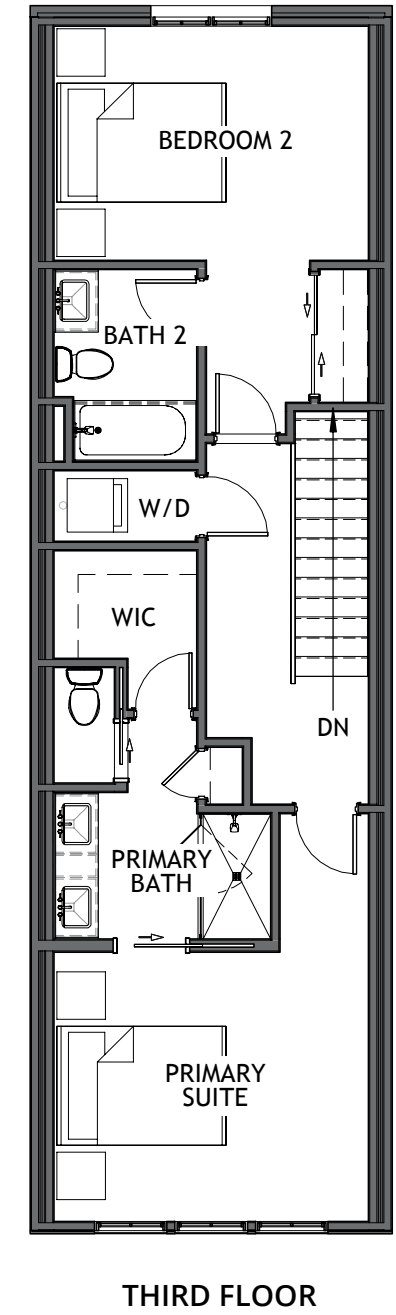
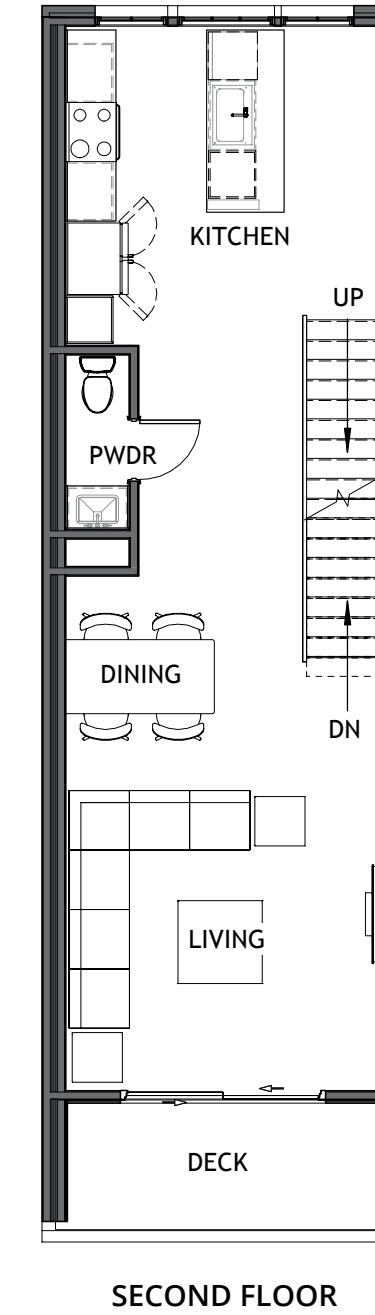
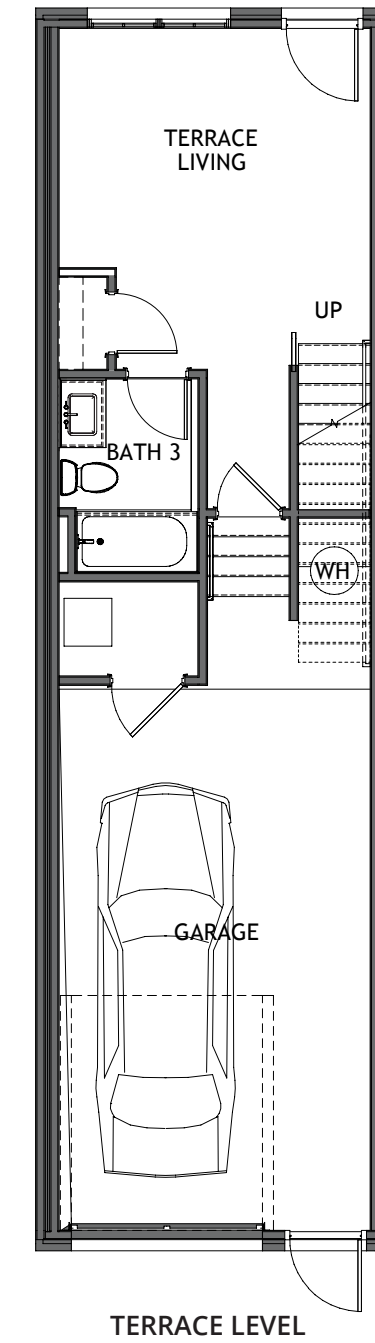
3 stories



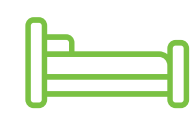
Deck



Anniston



Floor Plan



2 bedrooms



3.5 baths



1,644 sqft



3 stories



Patio



Included Features & Finishes

Uncompromising Exterior Quality

- Queen brick and fiber cement siding and trim*
- Black vinyl windows and front doors with glass accent
- Garage doors with remote openers
- Exterior electrical outlets and two hose bibs (front and back)
- Secure deadbolt locks on all exterior doors, keyless deadbolt on front door
- TPO or architectural shingle roof*

Exceptional Interior Finishes

- 10' ceilings on main floor, upper floors, and terrace*
- 2 panel 8' interior doors on all levels
- Ceiling fans included in living room, primary suite, and roof top, pre-wire and bracing for ceiling fans in all secondary bedrooms
- CAT-5e and cable outlet in family room and primary bedroom with dual USB outlet in Kitchen
- 1x8 base moulding and 1x4 cased window openings*
- LVP flooring throughout, excluding bedrooms, bathrooms, and laundry

Gourmet Kitchen

- 42" stained maple cabinetry with crown molding, quartz countertops, and under cabinet lighting
- Kitchen Aid® stainless steel appliance package
- Walk-in pantry*
- 1/3 HP garbage disposal
- Moen chrome pull down faucet

Luxury Primary Suite

- Raised height maple vanity with quartz countertop and rectangle undermount sinks, full width mirror, and 8" faucet spreads
- Semi-frameless shower enclosure
- Chrome plumbing fixtures
- Ceramic tile on floor, shower wall, shower floor, and shower niche
- Spacious walk-in closet with ventilated shelving

Secondary Bathrooms

- Raised height maple vanity with cultured marble vanity top and oval undermount sinks with 4" center set faucet
- Chrome plumbing fixtures
- Ceramic tile floor
- Tub shower combo with ceramic tile surround

Other Features

- LED flush mount lighting
- Smoke and CO2 detectors
- Engineered roof and floor system and engineered beams and headers*
- Ceramic tile floor in laundry room
- 1 year termite bond
- Tankless water heater
- 80-gallon electric tanked water heater*
- 15 SEER AC and heat pump with digital thermostats

Featured Upgrade Options

- KitchenAid Commercial or Wolf appliances
- Kitchen cabinets extended to the ceiling
- Farmhouse sink in kitchen
- Engineered hardwoods
- Frameless shower enclosure
- Crown molding throughout, excluding closets, bathrooms, and laundry
- Rooftop gas fireplace*
- Shiplap accent walls

Customer Assurance

- Construction Kick Off Meeting**
- Weekly communication with New Home Consultant and Project Manager
- Onsite blower door and duct testing for increased energy efficiency
- Customer Orientation and Final Walk-Through
- 1 year Limited Builders Warranty
- 10 year Limited Structural Warranty

*PER PLAN
**DEPENDENT ON STAGE OF CONSTRUCTION
FEATURES ARE SUBJECT TO CHANGE AT ANY
TIME AND WITHOUT NOTICE.
UPDATE JANUARY 24, 2024





Interested in learning more?

Get in touch with our team.

Our team is committed to the Brock Built promise - to help cultivate a sense of belonging, in desirable, convenient communities, with personalized finishing touches and innovation in our materials and craftsmanship. To prove it, every home we build comes with a one-year Limited Warranty and multiple touchpoints throughout the homebuilding process.

SEND US A MESSAGE

Email: info@brockbuilt.com
Phone: 470-693-9934

Be sure to follow for more.

